



Magswitch Heavy Sheet Leveler

Operation and Instruction Manual

Magswitch Technology Inc.
8774 Yates Dr #140
Westminster, CO 80031
www.Magswitch.com.au

Used with PN # 8100403, 8100418, and 810482

This Magswitch Heavy Sheet Leveler is designed as a quick connect-disconnect alignment device used with three of Magswitch's Heavy Lifters. This is the ideal device for leveling, aligning and welding those warped ferrous sheets lying around the warehouse. The Heavy Lifters are **NOT** provided and must be purchased separately.

**Read All Instructions! Failure To Follow All Instructions Listed Below
May Result In An Unsafe Or Dangerous Condition. See Pg.2 For Assembly Instruction;
Pg.4 For Overall Dimensions; Pg.5 For Operation Instruction.**



General Information

- All Magnets need to be *kept at a safe distance* from all magnetic storage devices, electronics, credit cards etc...
- Ensure that the Magswitch Heavy Lifter is *stored in the "off" position* when not in contact with Ferromagnetic metals. The Heavy Lifter can be left ON or OFF indefinitely without harm. When ON and near Ferromagnetic metals there will be a sudden and powerful attraction.
- *Never use a Heavy Sheet Leveler to lift or transport any materials*, although it is ideal for debris cleanup, nuts and bolts, metal shavings, etc...
- *DO NOT attempt to disassemble or alter* the Magswitch Heavy Lifter; there are no user serviceable parts inside the device.
- All Magswitch products are *designed for normal work/jobsite conditions*, do not use underwater or in a hazardous environment.
- *DO NOT use the Heavy Sheet Leveler if it is damaged or is not working properly*. Severe injury can occur if this device is not used properly and safely.
- *DO NOT expose the Heavy Lifter magnets to temperatures above 176 deg Fahrenheit (80 Celsius)*. High temperatures will permanently degrade the Magnet's effectiveness and may result in an unsafe condition.
- For painted or finish coated surfaces will *reduce the holding force* and the *finish may be damaged*.
- *This product contains PTFE lubricant*. For MSDS information contact Magswitch.
- *Always keep the bottom of the magnet clean and free of debris and rust*. If needed wipe with WD40 or light oil.
- *DO NOT attempt to alter the device* in any way. This will void the warranty and may result in an unsafe or dangerous condition.

To use the Heavy Sheet Leveler

- *Never exceed the rated capacity* of the Heavy Lifter. Always consider the orientation of load and center of gravity to avoid unnecessary moment forces.
- Always *test the connection* before attempting to use the Heavy Sheet Leveler to ensure that it is capable of holding the material securely.
- *Never turn the Magnet 'ON' unless it is in contact with Ferro-Magnetic metal*. The magnets can be left ON or OFF indefinitely without harm, however when they are in the ON position, and near ferromagnetic materials, there will be a powerful magnetic attraction.
- *Numerous factors can negatively affect the strength* of the magnetic bond. Dirt, debris, oils and grease, painted surfaces and any gap between the magnet and the metal surface will decrease the holding force. *Ensure that the connection point is clean* and free of these factors.
- *Thicker metals will be held more strongly than thinner metals*. E.g.: 1/4" (6mm) steel will be held more strongly than thin gauge metals.
- *Avoid sudden jerking or Shock force* as this can cause the Heavy Sheet Leveler to lose its hold or to move.
- *This Heavy Sheet Leveler is not designed to be used as a welding ground clamp* or as part of an electrical circuit.
- For safe operation, the *bottom surface of the Magnet must always be Flat and Smooth*. If necessary, it is possible to sand the Magnet face smooth using 400 grit sandpaper and a flat surface. *Always file any burrs* that would interfere with full contact.

Magswitch Heavy Sheet Leveler

Set Up Instructions

Read all instructions in the Owner's Manual!

Failure to follow all instructions May result in an unsafe or dangerous condition.

(1) Prepare Heavy Lifter for Heavy Sheet Leveler

- a. For MLAY1000x3, MLAY1000x4 and MLAY 1000x6, use the included M5 hex key to remove five M5 shoulder bolts in the position as arrows pointed. (Figure 1.a)
- b. Then use a M12 hex key to remove four M12 Shoulder bolts and two lifting lugs as arrows pointed. (Figure 1.b)

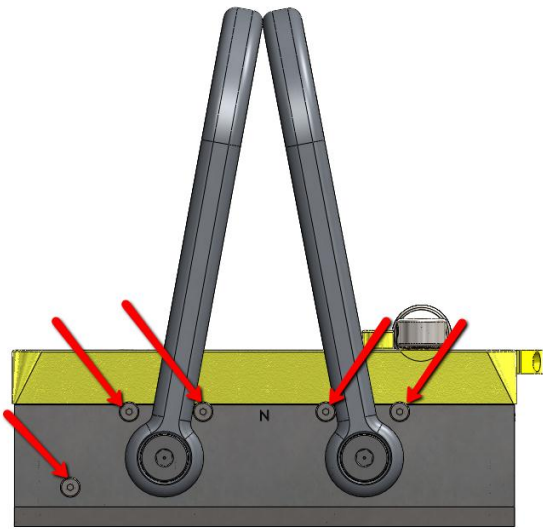


Figure 1.a: Remove Five M5 Shoulder Bolts

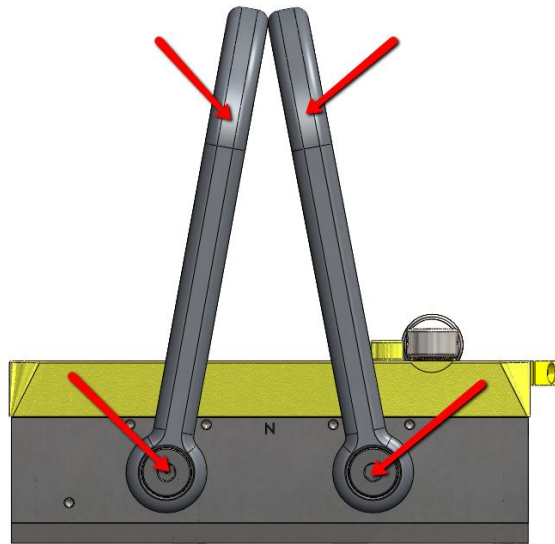


Figure 1.b: Remove Four M12 Shoulder Bolts and Two Lift Lugs

(2) Set Up Heavy Sheet Leveler

- a. Connect two Connection Side Plates to the magnet housing. Thread four included M12 Shoulder Head Bolts through connection side plates into magnet housing and torque to 27 N-m. (Figure 2.a-1)

Note: Use different sets of bolt holes in the Connection Side Plate for MLAY1000x3, 1000x4 and 1000x6. (See Figure 2.a-2 For Instructions)

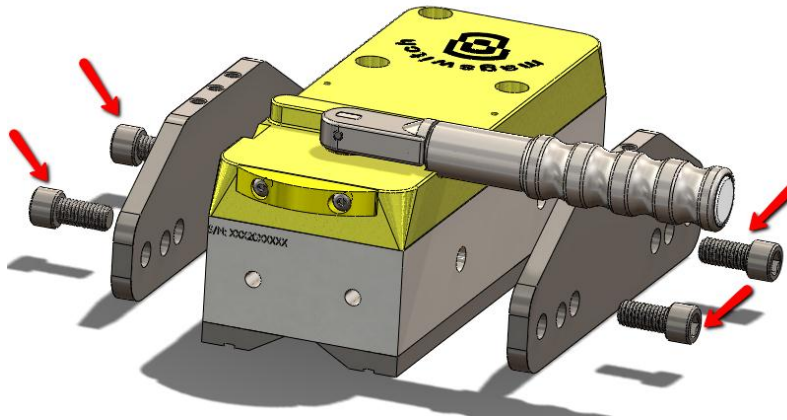


Figure 2.a-1: Connect Two Side Plates with Four M12 Socket Head Bolts



Figure 2.a-2: Use Inner Set of Bolt Holes for MLAY1000x3;
Middle Set for MLAY1000x4; Outer Set for 1000x6

- b. Connect the Connection Side Plates to the Heavy Sheet Leveler Main Plate by using the included four M8x25mm Shoulder Head Bolts and two M8x35mm Shoulder Head Bolts. Thread two M8x35mm Shoulder Head Bolts through the middle holes in the Main Plate into the middle thread holes in each Connection Side Plate and torque to 27 N-m. Then thread four M8x25mm Shoulder Head Bolts through the rest four holes in the Main Plate into the other four thread holes in the Connection Side Plates and torque to 27 N-m. (Figure 2.b)

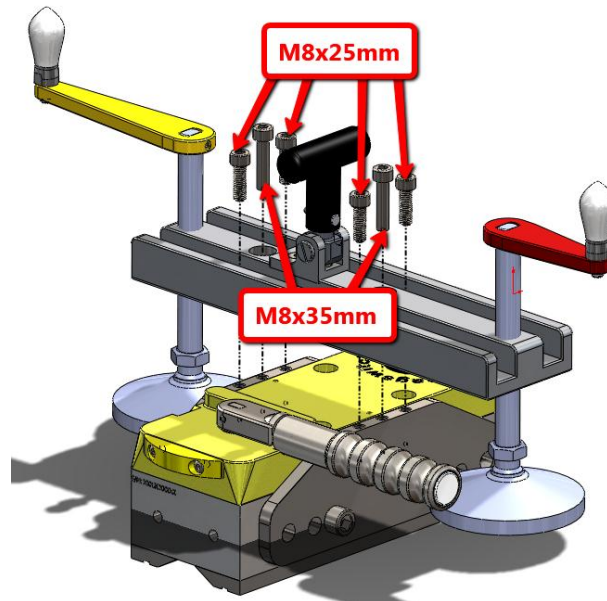


Figure 2.b: Connect the Side Plates (With Heavy Lifters) to the Heavy Sheet Leveler Main Plate by Four M8x25mm Bolts and Two M8x35mm Bolts

- c. After Setting up the Heavy Sheet Leveler, double check the handles installed. Make sure that the Long Yellow Handle was installed on the short side, and the Short Red Handle was installed on the long side. (Figure 2.c)

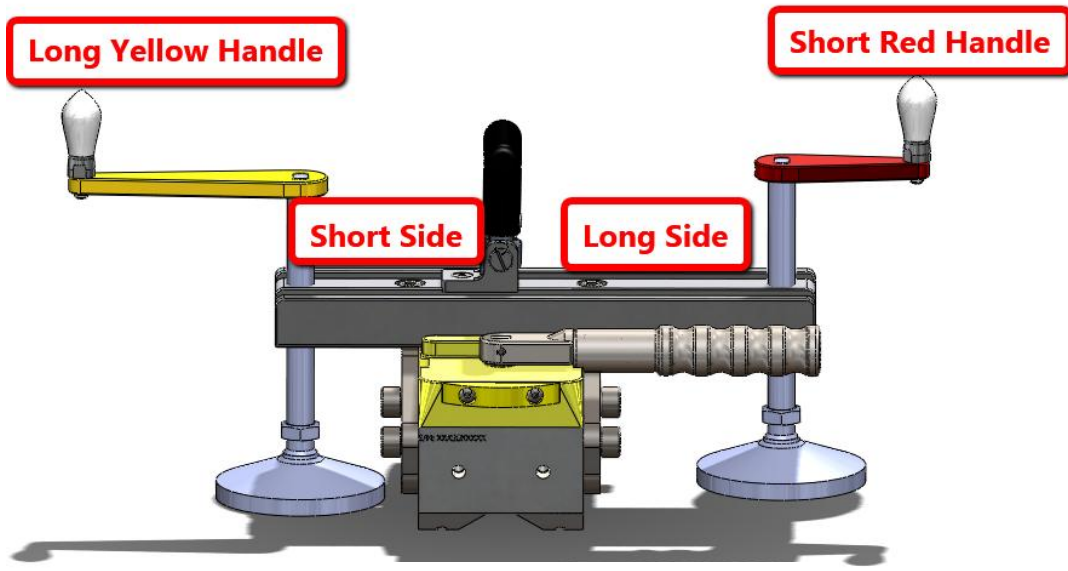
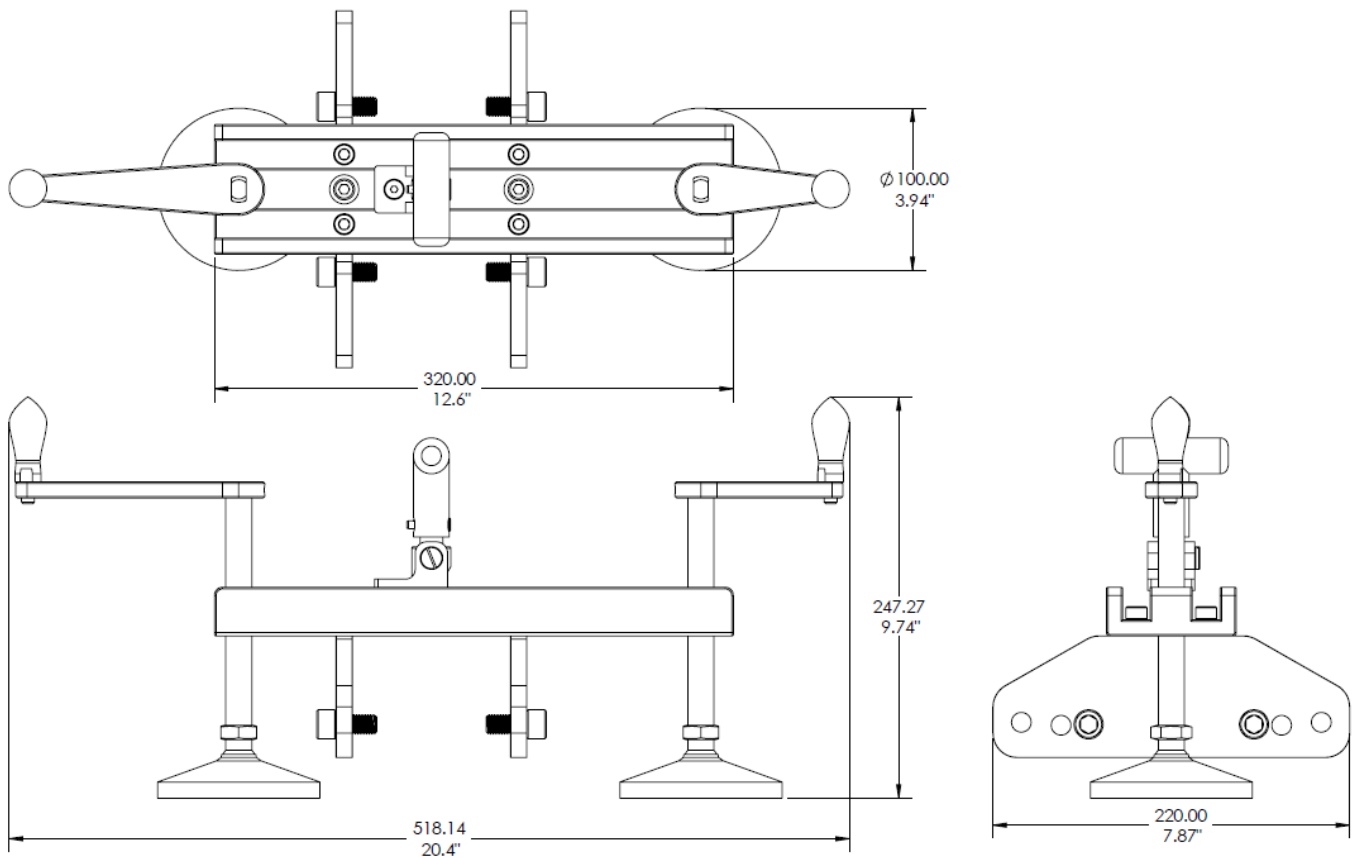


Figure 2.c: Handles Installation Direction

Overall Dimensions of Heavy Sheet Leveler



Magswitch Heavy Sheet Leveler

Operation Instructions

*Read all instructions in the Owner's Manual!
Failure to follow all instructions May result in an unsafe or dangerous condition.*

Follow the Operation Instructions below when using Magswitch Heavy Sheet Leveler.

(A) Position the Heavy Sheet Leveler with the Long Yellow Handle side foot on the seam.
(Figure A)

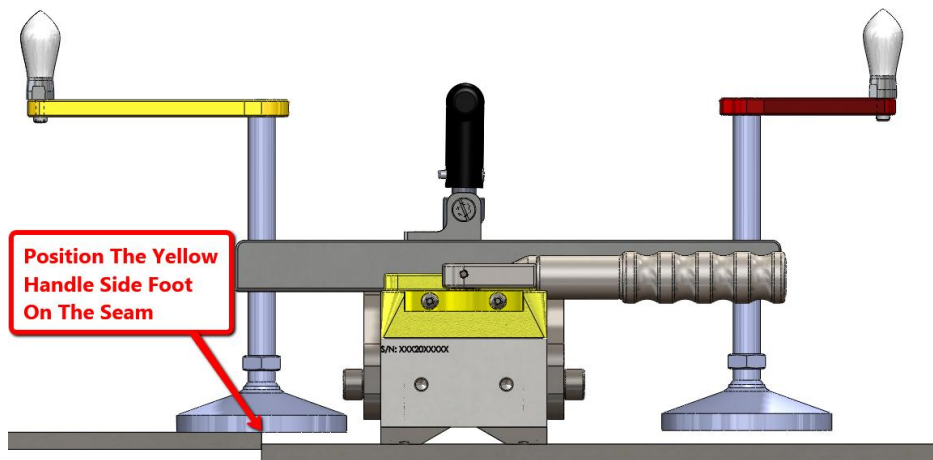


Figure A

(B) Turn the Magnet ON with Magnet on the lower side. (Figure B)

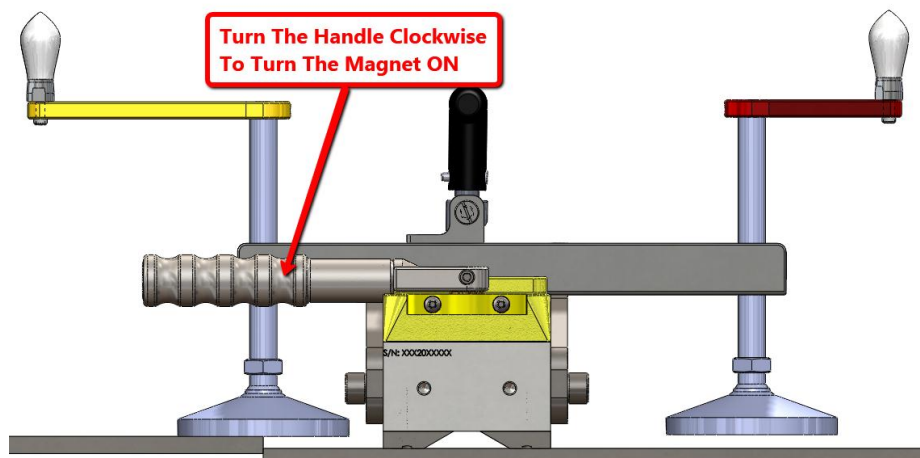


Figure B

(C) Turn the Short Red Handle until the Red Handle side foot is flush with steel (**DO NOT OVERTIGHTEN**). (Figure C)

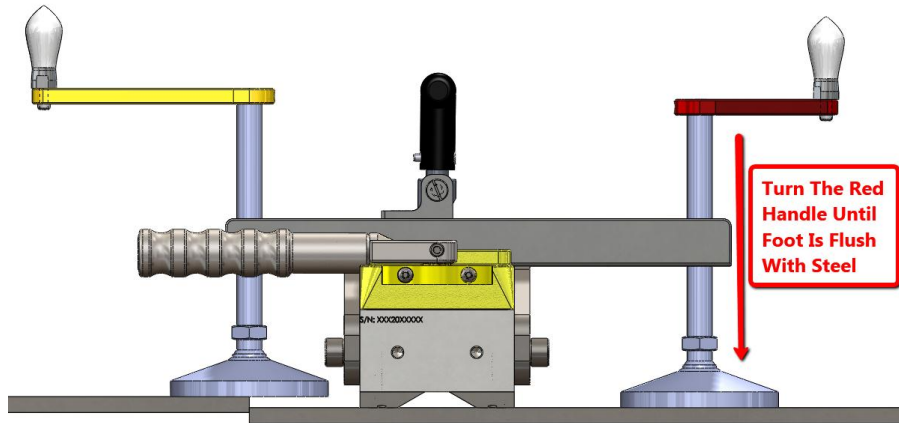


Figure C

(D) Tighten the Yellow Handle until sheets are even. (Figure D)

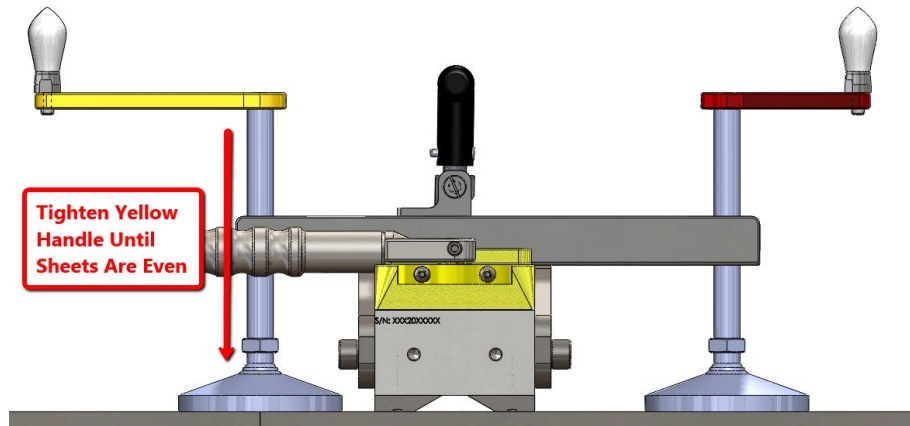


Figure D

(E) Turn OFF the Magnet when finished.

For repair and recertification services: Contact Magswitch at 303-468-0662, cs@magswitch.com.au, or Magswitch Technology Inc. 8774 Yates Dr. #140, Westminster, CO 80031

Magswitch Limited Warranty

Magswitch products are covered by a One Year Limited Warranty on Material and Workmanship. Warranty is Non-Transferable.

Magswitch reserves the right to inspect all product claims under warranty. Any alteration of the device voids this warranty.

User assumes all risk for the proper use of this device and for ensuring product suitability for intended application.

This warranty shall not cover any incidental or consequential damages due to the improper use or failure of this device.

All Magswitch products are intended for the use identified on the package - not intended for resale or integration into products for resale. Contact Magswitch for inquires on integration of technology. Australian Patent: 753496, Chinese Patent: 254155, New Zealand Patent: 518865, Singapore Patents: 88931; 103413, South Africa Patents: 2002/3752; 2004/1785, US Patents: 6,707,360; 7,012,495. Additional Patents and Patent Applications Pending.